

The Isle of Man is for...



Contents

- 03 Forward thinking
- 04 Facts and location
- 05 A home for business and diversity
- 07 A place to prosper
- 09 The Isle of Legends
- 11 Living the Island life
- 13 Excellent essentials
- 15 Safe and secure
- 17 Where modern meets classic
- 19 Room to breathe
- 21 State of the art
- 23 Calling the Island home
- 25 Glossary



Isle love Man



Forward thinking

The Isle of Man is beautiful. It has some fabulous scenery, enchanting glens, miles of uncrowded beaches, medieval castles, Victorian railways, trams and beautiful parks and gardens. It is a land of opportunity where people and business can reach their full potential.

As a nation, we have embraced our Freedom to Flourish strategy, which is designed to promote an inclusive society with a high quality of life, protect our heritage and raise awareness of the Isle of Man.

People of all ages enjoy a healthy, active lifestyle and a tremendous quality of life in the Isle of Man, with beautiful countryside, very low crime rates and excellent public services.



Kayak chasms



Did you know?

You may know the Island for the TT races and maybe Mark Cavendish, but here are some facts you might not know...

- 4 of the world's Top 10 satellite companies have offices in the Isle of Man
- Pilates was developed on the Island by Joseph Pilates
- More than 100 wallabies are living wild on the Isle of Man
- 3G telecommunications was trialled in the Island and the first country in Europe to go live with it
- The landing gear system for all Airbus A320s are manufactured on the Isle of Man
- Ejection seats used in the Red Arrows aircraft are manufactured on the Island
- Integral parts for the optics of the Mars Rover "Curiosity" were manufactured on the Island
- The Isle of Man Aerospace Cluster is involved in design and manufacture of engineered components and assemblies of every major civil and military project on the planet
- The Manx flag and a sample of earth taken from Tynwald Hill has flown on the space shuttle and orbited the Earth on the International Space Station
- The Isle of Man is in the Top 10 registries in the world for business and private jets
- From the summit of the only mountain on the Isle of Man, on a clear day, you can see England, Ireland, Scotland and Wales
- The Bees Gees were born on the Isle of Man
- The World Record holder for smallest production automobile is held by the Peel P50 car, manufactured on the Isle of Man, and ably demonstrated by Jeremy Clarkson driving through BBC Television Centre on Top Gear

Facts and location

- Capital: Douglas
- Population: 84,497 (2011 Census)
- Land Area: 572 sq. km/ 221 square miles
- Population Density: 133 people per sq. kilometre or 336 people per sq. mile
- Location: The centre of the Irish Sea - 50 km (31 miles) from Ireland and 50 km (31 miles) from the U.K.
- Longest River: Sulby (17 km/ 10.5 miles)
- Highest Peak: Snaefell (621 m/ 2036 feet)
- Head of State: Her Majesty the Queen
- Lieutenant Governor: Mr Adam Wood
- Chief Minister: Hon Allan Bell MHK
- Status: An internally self-governing dependent territory of the Crown which is not part of the United Kingdom
- Parliament: Tynwald
- Currency: Manx pounds and pence (equivalent to GB pounds)
- Languages: English and Manx Gaelic
- Motto: 'Quocunque Jeceris Stabit', which translates literally from Latin as 'whithersoever you throw it, it will stand', continues to feature on the Coat of Arms. This motto has been associated with the Isle of Man since about 1300. It was, reportedly, in use before this date by the MacLeods of Lewis as ancient Lords of the Isles of Scotland which, after 1266, included the Isle of Man.



A home for business and diversity

The Isle of Man is a leading international business centre renowned for innovation and professionalism. Perhaps best known for its financial services industry, the Island has successfully encouraged the diversification of its economy in recent years and is now home to a wide range of sectors including:

- Aviation
- Maritime
- Clean-tech and bio-med
- Space
- Creative industries
- High-tech manufacturing
- Financial services
- e-Business
- e-Gaming
- Tourism
- Retail

The Island is a place dependent on its people. Their beliefs and values are as important as their skills and vision. Those calling it home compete and engage enthusiastically in a global economy but live in an island community where family matters.





A place to prosper

Stability

The Isle of Man has its own democratically elected Parliament and judicial system. In addition, the Isle of Man has healthy reserves along with a stable and diverse economy with 30 years of economic growth.

Tax regime

The Isle of Man has a clear and simple tax regime with no Capital Gains Tax, Withholding Taxes or Wealth Taxes.

Supportive Government

The Island recognises that the most effective way to create a successful business environment is to engage with its stakeholders and has formed positive relationships with the private sector. Ministers are accessible, which means ideas are heard and acted upon. This enables us to be agile, responsive and well placed to react to the challenges of the global economy.

Regulation

The Isle of Man strives to be a model of political stability, transparency and financial supervision. We are at the forefront of best practice in international regulation and have been praised by global bodies including the OECD, G20 and IMF for our commitment to financial and supervisory standards. The Isle of Man has been the pioneer in introducing pragmatic regulation and consumer protection priding itself in being

responsive to international needs

The Isle of Man has signed a number of international tax agreements which reflect the Island's commitment to complying with international standards.

Infrastructure

The Isle of Man has an excellent telecoms and power infrastructure which has benefited from hundreds of millions of pounds worth of public and private sector investment in recent years. It is this infrastructure which has helped provide the foundation for the Island's success as a major centre for e-Business activities. In addition, the Island offers internationally orientated service expertise a global client base.

Accessibility

The Island enjoys excellent transport links to major transport hubs in the UK and Ireland with over 100 flights per week to London, Liverpool and Manchester, as well as regular flights to many other regional airports, making the Isle of Man an ideal gateway from which to travel to Europe and the rest of the world.

Excellent quality of life

With beautiful countryside, very low crime rates and excellent public services including health care and high educational standards, there is a relaxed and peaceful way of life on the Isle of Man. The Island boasts a fine selection of

restaurants, shopping and leisure facilities, yet away from the busy commercial centres, the Island has retained a pace of life which is the envy of most urban-dwellers.

Financial support

If you are relocating your business to the Island or starting a new business, additional support in the form of grants may be available.

Residency

There are no residency restrictions on the Island.





The Isle of Legends

The Isle of Man has earned a global reputation for its pioneering spirit and history of innovation.

In 1824, Sir William Hillary, a Manx resident, created the lifeboat service which later became the Royal National Lifeboat Institution.

Art Nouveau artist Archibald Knox was born on the Island in 1864. His designs for Liberty & Co made him a household name, as did his watercolours, graphic designs and fonts.

And in 1881 the Isle of Man was among the first countries to give women the vote.

The Island has seen over 100 films made on its shores, with names such as Johnny Depp, Penelope Cruz and John Malkovich to name but a few. More recently, local actress Samantha Barks has starred alongside Anne Hathaway and Hugh Jackman in *Les Misérables* to much critical acclaim.

Working from his Isle of Man studio, Roger W. Smith makes extraordinary timepieces, following *The Daniels Method*, and is proud to be developing the Island's reputation as the Centre of Excellence for watch making.

The Island is the birthplace of disco legends the Bee Gees – who were later to become one of the best-selling recording acts of all time.

In recent years, the Isle of Man has seen a meteoric rise in its sporting legends, with Tour de France Green Jersey and world championships gold medallist winner Mark Cavendish, Olympic Gold cyclist Peter Kennaugh and Zoe Gillings, Britain's No. 1 Olympic Snowboard Cross athlete, promoting the Island on a worldwide scale. The Isle of Man TT races have attracted the worlds finest motorcycle riders for over 100 years, and Ramsey's Conor Cummins is currently holds the record as the fastest Manxman around the Mountain circuit.

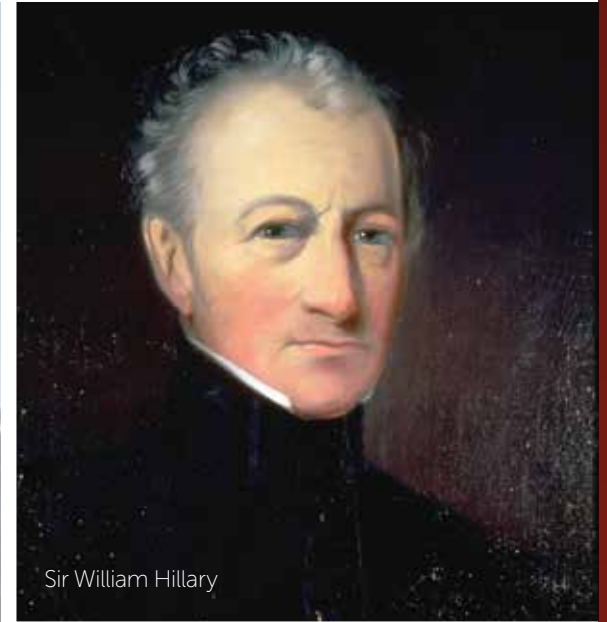
Others are following in their footsteps and helping to raise the Island's reputation as a country which enables people to flourish.



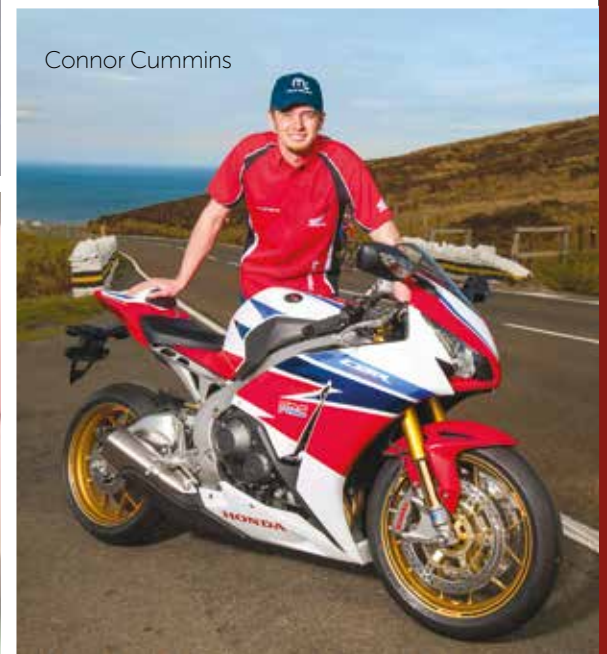
Peter Kennaugh MBE
Image courtesy of Dave Kneen/ManxPhotosOnline



Zoe Gillings



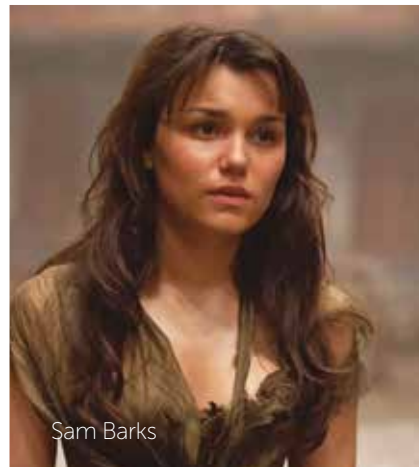
Sir William Hillary



Connor Cummins



Archibald Knox



Sam Barks



Roger W. Smith
watchmaker

Archibald Knox & Sir William Hillary Images courtesy of Manx National Heritage.

Living the island life

The Isle of Man, with its relaxed and peaceful way of life and friendly residents, boasts a fine selection of restaurants, attractions and leisure facilities and activities.

The Island has retained a pace and quality of life, which is envied by many, and with low crime rates the Island is one of the safest places in the British Isles.

With the tourism industry complementing other sectors of the Island's varied economy, residents enjoy amenities such as the theatre, cinemas, modern hotels, health clubs, casino and nightclubs in addition to the many public houses and quality restaurants.

Heritage forms an important part of Island life. There are many historical attractions and a rich spectrum of ancient monuments spanning 10,000 years of Manx history.

Newcomers to the Island are surprised by the variety of scenery, which exists in such a relatively small landmass. From rolling hills to picturesque farmlands, spectacular coastal scenery to secluded glens, the Island provides a wealth of diverse leisure activities, with an emphasis on sport and outdoor pursuits.

The choice of outdoor sports is considerable. Cycling, golf (we have 9 courses), sea and river fishing, sailing, windsurfing, mountain biking, diving and hiking are popular. The Island is internationally known as a centre for motorsport events, especially the annual TT Races for motorcycles.





Excellent essentials

The Isle of Man has a high performing education system consisting of 32 well-resourced primary schools and five regional secondary schools which all share a strong commitment to meet the requirements of the Island's young people.

Perhaps the most significant accolade paid to the Island's system came recently from Professor Guy Claxton, an internationally renowned educational researcher, author and university lecturer, who observed:

"I've been stunningly impressed by the schools I've already seen on the Island, by the literature I've seen from the Department of Education and Children and the 'Essentials for Learning' programme here. It seems as rich and as fruitful a culture for learning-centered education as I've met anywhere in the world."

Independent school King William's College, founded in 1833, is a co-educational, day and boarding school set in the beautiful safe haven of Castletown in the Isle of Man. Located on two sites, the Senior School is within one minute of the airport and has excellent links worldwide, whilst the Junior School is situated a mile away the delightful wooded grounds of an old country residence.

The Isle of Man offers a comprehensive health service operated on an NHS-style basis providing a full range of services, from hospitals and specialists to district nursing, and the government is responsible for doctors, dentists, optometrists and pharmacists.

Health has enjoyed significant investment by the Isle of Man Government including the state-of-the-art £112 million Noble's Hospital.





Calling the Island home - a personal relocation story



Michelle P. Tonnesen

Trailing spouse. Accompanying partner. Expat wife. A rose of many names – and here I am, blooming away in the Irish Sea. The archetypical female “come-over” (as the locals call us) of the 21st century, who has followed her business executive husband on an adventure into the unknown: relocating to the Isle of Man.

So, how does a well-educated cosmopolitan keep sane on “The Rock”? Fortunately, the life of my kind has evolved from the days of ladies in pearls solely sipping gin and tonics at leisurely lunches. If your profession is a stay-at-home

mum, you have the advantage of your child(ren) being your access pass to a wide range of social activities. If the corporate environment is more your thing, the thriving business community is hungry for fresh additions to the local resource pool.

Personally, I have had the advantage of benefitting from both worlds: building cherished friendships – for parents and children alike – through play dates and family lunches; as well as building my own company offering bespoke business consulting and creative writing services to a loyal client base.

Indeed, moving here from a big city like London initially felt overwhelming. However, the trade-off has been as far from a negative one as I could ever have imagined. A sound sense of realism and an open-mind has stood us in good stead along the way. This is not Hong Kong, Paris or Dubai where a cornucopia of leisure opportunities await you on your doorstep. Instead you gain immediate access to fresh air, beautiful nature, zero commute, helpful locals – all contributing to a quality of life which it is hard to find anywhere else in Northern Europe. In addition, we have some excellent restaurants, an ample array of cultural pursuits like art galleries, museums, concerts and Broadway musicals, as well as entertaining venues and festive events for families, couples and singles alike.

Several high street brands have found their way to our shopping areas – and thanks to our well-developed digital and shipping infrastructure you have access to the joys of online shopping too, of course.

Yes, it can be a challenge to live in a small and relatively slow-paced community; on an island at that with its natural limitations and transport challenges; and the weather is truly as fickle as a feather in a stream. But journey away once in a while and you will see the unbeatable advantages of living here whenever you come back. There really is no place to live like the Isle of Man.

Michelle P. Tonnesen is originally from Scandinavia, but has lived in Brussels, the Middle East and London before relocating to the Isle of Man with her family in 2011. She is an independent business consultant specialised in change management and communication. After moving to the Island she chose to explore creative writing as well. She has since published numerous articles on lifestyle and business subjects, and is currently working on her first novel inspired by her local and cosmopolitan journeys.

For more about Michelle visit www.mimo.co.im

Calling the Island home - for a business relocation



John O'Driscoll, Highland Scientific

"I just love the Isle of Man: it's an absolutely fantastic place." Highland Scientific Managing Director John O'Driscoll is unequivocal in his assessment of the Island as a place to do business and it is this belief that led him to decide the Isle of Man was the right place for a brand new manufacturing facility.

Primarily a research and development company, Highland Scientific generates enabling technologies for production processes around the world. In particular it specialises in the application of thin film coatings which are used by a wide range of industries including optical, aerospace, semiconductor, military, defence and oil and gas.

The Isle of Man will be the base for manufacturing developments using its ground-breaking 'Diamond Like Carbon' process which combats corrosion in the Oil & Gas industry. With such cutting-edge technological requirements John, who has been developing the business at its UK headquarters in Bedford, England since buying it in 2003, was rightly cautious in deciding where the next step should take place.

"Initially the logistics of shipping worried me as I need to be confident we can deliver promptly to customers worldwide. When it became clear we needed a new manufacturing facility, we searched around the British Isles for the best place to base it but when you looked at all the factors, the Isle of Man won out. In our Isle of Man business we will manufacture some really big machines to coat the inside of 60' long oil pipes with Diamond Like Carbon.

"One of the most important elements for us is to train and retain highly skilled technical staff. In England we found that people would often move on once they were trained but in the Isle of Man employees are a lot more loyal. Generally people on the Isle of Man want to stay on the Isle of Man and you have this phenomenon where technical people attract other technical people, they like to be together which means you get a pool of talented, highly-skilled people."

John's initial shipping concerns were solved by an arrangement with a Bristol-based shipping company and the development of re-usable crates. "It's no different to shipping from the UK," says John, "and as we are developing very high value machines, the cost of shipping is a very small contributor to the end price. In terms of getting parts to the Island for assembly, we just keep a bit more in stock to ensure we don't run out of anything if there are delays due to bad weather."

John had already been aware of the Island's attractions to new businesses through conversations with Adrian Moore, Chair of the Isle of Man Aerospace Cluster, and says the Isle of Man Government "couldn't have been more helpful". John was able to take advantage of the financial grant scheme to gain accreditation for five key ISOs and the Freeport location offered the chance for custom-built facilities which include room for future expansion.

And future expansion is clearly a major goal for Highland Scientific. John estimates the Isle of Man business will employ up to 500 people at the end of its current ten year plan (making it a major employer on the Island) and is also planning a stock market flotation before the decade is out. "I feel totally positive about the Isle of Man and our future there," says John, "It has all the right ingredients to build a successful business."



Why the Isle of Man?

- Wide range of quality property available – with no restrictions on owning property
- Easily accessible from the UK and Europe, just an hour from London
- High quality of life in a safe, secure and private environment
- Diverse economy with nearly 30 years of economic growth
- Excellent education and healthcare systems
- Competitive tax regime

ISLE OF MAN WHERE YOU CAN

Department of Economic Development,
St Georges Court, DOUGLAS,
Isle of Man, IM1 1EX
Tel: +44 (0)1624 687361
Contact - Andy Bostock

 **Isle of Man**
Giving you Freedom to Flourish

www.wheretheycan.com

home

Home Strategic, Ballafletcher Road
DOUGLAS, Isle of Man, IM4 4QJ
Tel: +44 (0)1624 610121
www.homestrategic.com
Contact - Lee McLellan

strategic marketing | creative design | pr and media relations research | office planning